

Technical Specification

Power Supply	230V – 50/60 Hz
Power Consumption	2 outputs (switch max 2A)
Ambient Temperature	0...35°C / 32...95°F
Humidity	95% r.H
Dimentions	46.5x42x21 (LxWxH)
Maintanance & Cleaning	This device is free of maintainace and may only be cleaned with a dry cloth.



AH-OnOff-G5Q

Wi-Fi Switch Module

The device is a functional prototype, so no warranty is assured from our behalf.

It's usage is within user's full scope of responsibility.

Info@ahonoff.eu

**Thanks for Buying
an OnOff Device**



AH-OnOff-G5Q

Wi-Fi Switch Module



220V ~ 50Hz

Wi-Fi : 2.4GHz-802.11b/g/n

REV 3.0



About the product

The **OnOff** is a device for automatic control of home switches.

Once installed, Each **OnOff** device will create its own network named **OnOff-xxx**.

The password of that newly generated network is **AHOnOff@** by default. Once that network is acquired,

Go to **<http://192.168.4.1>** in your Web Browser to access the main control panel.

AP Password : **AHOnOff@**

Default Username : **admin**

Default Password : **AHOnOff**

The process above described is not required case you opt to Download Our Official Mobile App.

About the product

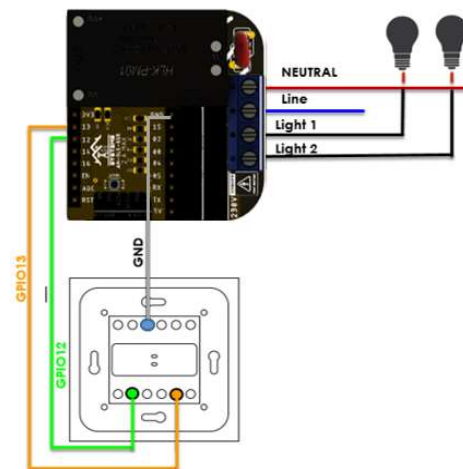
- supports Home Assistant
- supports Alexa
- temperature sensors
- motion sensors

Installation

The installation of the device has to be carried out by a qualified person.
The device has to be fitted in accordance with building regulations for electrical and safety.

Supply and Relay Outputs

Wire Conductor	1...2.5mm
Exposed Wire Length	6mm
Temperature Rating of Wire	Min. 70°C / 32...158°F
Terminals	
Screw - Technology	To make connection insert the wire and screw in the screws from the coonector. For strsnded wires : Conductors must be undamaged and twisted (use ferrules for small wires)



max. 10A total load for terminas